

JST Series

HORIZONTAL MULTISTAGE PUMP



OPERATING CONDITIONS

Self-Priming Multistage Pumps are able to develop high pressure and a high water lift with a comparatively lower power consumption.

Universal pump for civil and industrial purposes, for high pressure system and for irrigation in agriculture and sports fittings.

OPERATING CONDITIONS

- Max Suction: 9m
- Max Liquid Temperature: 110°C
- Max Ambient Temperature: +45°C

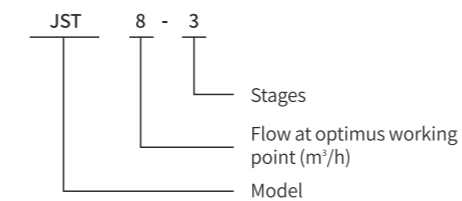
PUMP

- PUMP BODY: stainless steel
- IMPELLER: Stainless steel
- MECHANICAL SEAL SETS: Ceramic, graphite and rubber

MOTOR

- Motor efficiency: IE1,IE2/IE3
- Built-in thermal protector for the single phase motor
- INSULATION: Class B/F
- PROTECTION: IP44/54

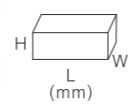
IDENTIFICATION CODES



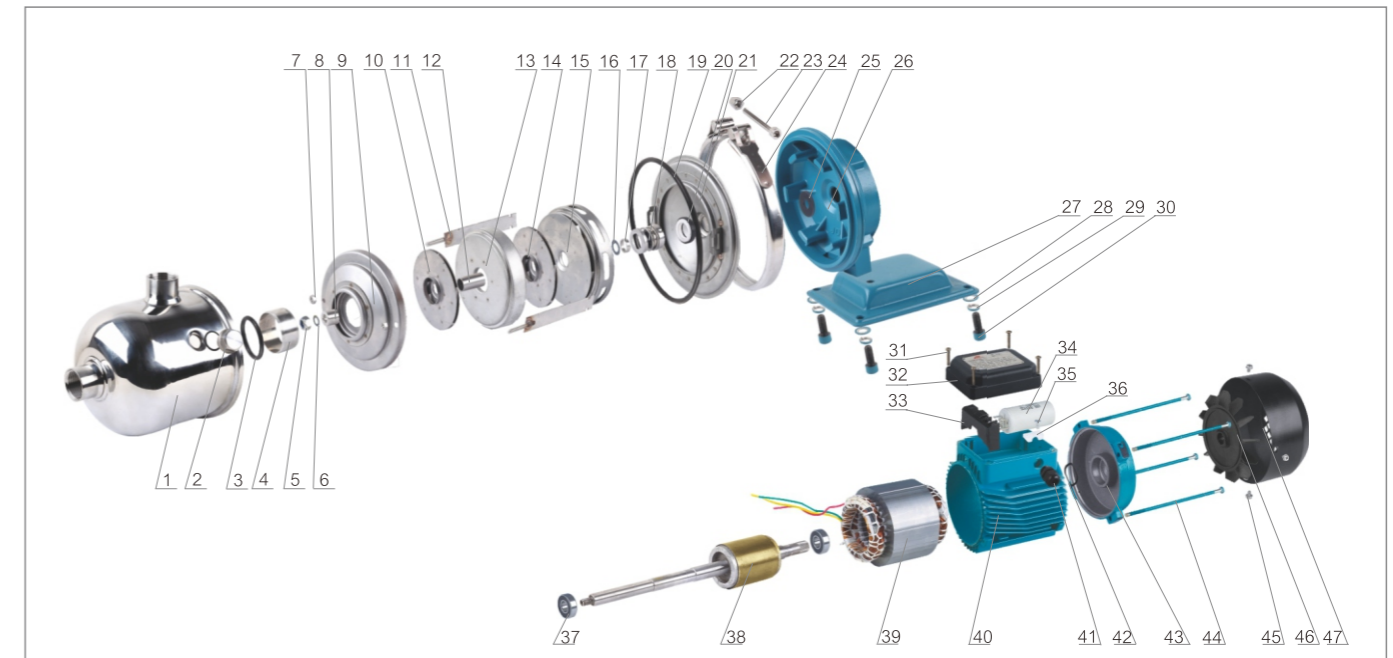
TECHNICAL DATA (220~240V/50Hz)

MOQ for each model / Kraft Carton: 50PCS

Model	Single-phase Motor n=2850r/min						PIPE				Package dimensions & G.W. (mm)				
	Input max kW	Output Power kW	HP	Current A	Q.max L/min	H.max m	Suct.max m	DNA		DNM		L	W	H	kg
								Inch	mm	Inch	mm				
JST2-2	0.55	0.37	0.50	2.5	50	20	1"	25	1"	25	400	145	215	13	
JST2-3	0.55	0.37	0.50	2.5	50	28	1"	25	1"	25	400	145	215	13	
JST2-4	0.75	0.55	0.75	3.8	55	35	1"	25	1"	25	400	145	215	13	
JST2-5	0.75	0.55	0.75	3.8	55	45	1"	25	1"	25	400	145	215	13	
JST2-6	1.10	0.75	1.00	5.2	58	52	1"	25	1"	25	445	170	225	15	
JST4-2	0.55	0.37	0.50	2.5	100	20	1.25"	32	1"	25	400	145	215	12	
JST4-3	0.75	0.55	0.75	3.8	115	30	1.25"	32	1"	25	400	145	215	12	
JST4-4	1.10	0.75	1.00	5.2	115	40	1.25"	32	1"	25	445	170	225	15	
JST8-1	0.75	0.55	0.75	3.8	170	10	2"	50	2"	50	560	170	230	20	
JST8-2	1.10	0.75	1.00	5.2	170	20	2"	50	2"	50	560	170	230	20	
JST8-3	1.50	1.10	1.50	7.0	170	30	2"	50	2"	50	560	170	230	25	
JST8-4	2.10	1.50	2.00	9.6	180	40	2"	50	2"	50	580	180	240	25	
JST8-5	2.90	2.20	3.00	13.9	180	51	2"	50	2"	50	580	180	240	30	
JST12-1	1.10	0.75	1.00	5.2	250	12	2"	50	2"	50	560	170	230	20	
JST12-2	1.50	1.10	1.50	7.0	250	24	2"	50	2"	50	560	170	230	21	
JST12-3	2.40	1.80	2.40	11.5	250	36	2"	50	2"	50	580	180	240	25	
JST12-4	2.90	2.20	3.00	13.9	250	48	2"	50	2"	50	580	180	240	29	
JST12-5	4.00	3.00	4.00	17.0	250	60	2"	50	2"	50	610	195	270	34	



MATERIALS TABLE



NO.	DESCRIPTION	NO.	DESCRIPTION	NO.	DESCRIPTION	NO.	DESCRIPTION	NO.	DESCRIPTION
1	Pump Body	11	Water Part Connector	21	M-Seal Holding Disc	31	Screw For T-Box	41	Cable Gland
2	Plug	12	Bush	22	Nut For Band Fastening	32	Terminal Box	42	Adjusting Ring
3	O-Ring For Connector	13	Diffuser Assembly	23	Hex Bolt For Band Fastening	33	Terminal Block	43	Rear Cover
4	Pipe Connector	14	Impeller	24	Band Fastening	34	Capacitor	44	Motor Tie-Rod
5	Impeller Stop Nut	15	Outlet Diffuser Assembly	25	Splash Guard	35	Screw For Cable Presser	45	Fan Cover Screw
6	Plain Washer	16	Plain Washer	26	Motor Bracket	36	Cable Presser	46	Fan
7	Nut For Water Part Connector	17	Short Bush For Impeller	27	Motor Base	37	Bearing	47	Fancover
8	Gland For 1St Impeller	18	M-Seal Rotating Part	28	Plain Washer	38	Rotor With Shaft		
9	Inlet Diffuser Assembly	19	Pump Body O-Ring	29	Spring Washer	39	Stator With Winding		
10	Impeller	20	M-Seal Static Ring	30	Base Hex Bolt	40	Motor Housing		

HYDRAULIC PERFORMANCE CURVES

