

# JST Series

## HORIZONTAL MULTISTAGE PUMP



### OPERATING CONDITIONS

Self-Priming Multistage Pumps are able to develop high pressure and a high water lift with a comparatively lower power consumption.

Universal pump for civil and industrial purposes, for high pressure system and for irrigation in agriculture and sports fittings.

### OPERATING CONDITIONS

- Max Suction: 9m
- Max Liquid Temperature: 110°C
- Max Ambient Temperature: +45°C

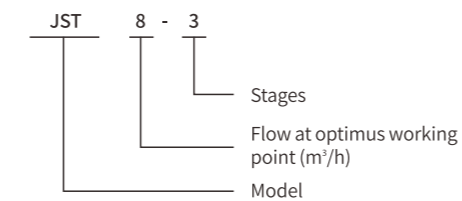
### PUMP

- PUMP BODY: stainless steel
- IMPELLER: Stainless steel
- MECHANICAL SEAL SETS: Ceramic, graphite and rubber

### MOTOR

- Motor efficiency: IE1,IE2/IE3
- Built-in thermal protector for the single phase motor
- INSULATION: Class B/F
- PROTECTION: IP44/54

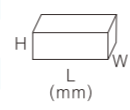
### IDENTIFICATION CODES



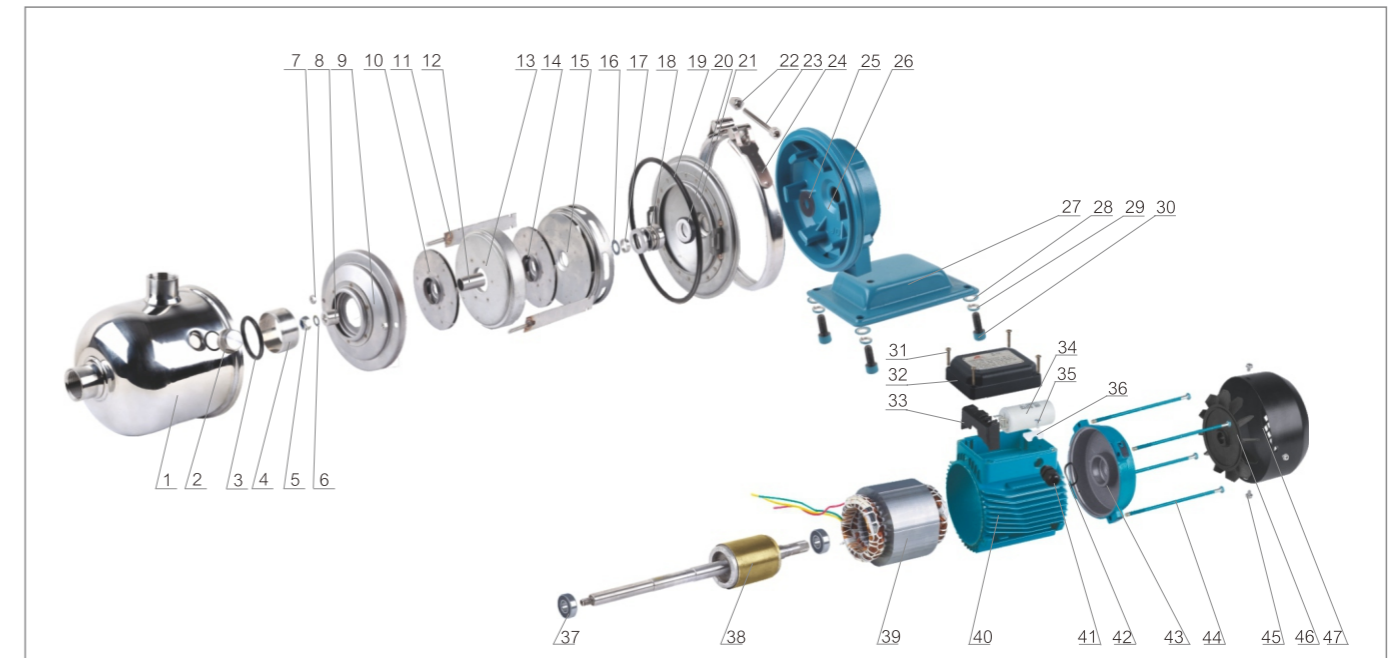
### TECHNICAL DATA(220~230V/60Hz)

MOQ for each model / Kraft Carton: 50PCS

Model	Single-phase Motor			n=3450r/min			PIPE				Package dimensions & G.W. (mm)			
	Input max kW	Output Power		Q.max L/min	H.max m	Suct.max m	DNA		DNM		L	W	H	kg
		kW	HP				Inch	mm	Inch	mm				
JST2-2	0.55	0.37	0.50	50	20		1"	25	1"	25	400	145	215	13
JST2-3	0.55	0.37	0.50	50	28		1"	25	1"	25	400	145	215	13
JST2-4	0.75	0.55	0.75	55	35		1"	25	1"	25	400	145	215	13
JST2-5	0.75	0.55	0.75	55	45		1"	25	1"	25	400	145	215	13
JST2-6	1.10	0.75	1.00	58	52		1"	25	1"	25	445	170	225	15
JST4-2	0.55	0.37	0.50	100	20		1.25"	32	1"	25	400	145	215	12
JST4-3	0.75	0.55	0.75	115	30		1.25"	32	1"	25	400	145	215	12
JST4-4	1.10	0.75	1.00	115	40		1.25"	32	1"	25	445	170	225	15
JST8-1	0.75	0.55	0.75	170	10		2"	50	2"	50	560	170	230	20
JST8-2	1.10	0.75	1.00	170	20		2"	50	2"	50	560	170	230	20
JST8-3	1.50	1.10	1.50	170	30		2"	50	2"	50	560	170	230	25
JST8-4	2.10	1.50	2.00	180	40		2"	50	2"	50	580	180	240	25
JST8-5	2.90	2.20	3.00	180	51		2"	50	2"	50	580	180	240	30
JST12-1	1.10	0.75	1.00	250	12		2"	50	2"	50	560	170	230	20
JST12-2	1.50	1.10	1.50	250	24		2"	50	2"	50	560	170	230	21
JST12-3	2.40	1.80	2.40	250	36		2"	50	2"	50	580	180	240	25
JST12-4	2.90	2.20	3.00	250	48		2"	50	2"	50	580	180	240	29
JST12-5	4.00	3.00	4.00	250	60		2"	50	2"	50	610	195	270	34



### MATERIALS TABLE



NO.	DESCRIPTION	NO.	DESCRIPTION	NO.	DESCRIPTION	NO.	DESCRIPTION	NO.	DESCRIPTION
1	Pump Body	11	Water Part Connector	21	M-Seal Holding Disc	31	Screw For T-Box	41	Cable Gland
2	Plug	12	Bush	22	Nut For Band Fastening	32	Terminal Box	42	Adjusting Ring
3	O-Ring For Connector	13	Diffuser Assembly	23	Hex Bolt For Band Fastening	33	Terminal Block	43	Rear Cover
4	Pipe Connector	14	Impeller	24	Band Fastening	34	Capacitor	44	Motor Tie-Rod
5	Impeller Stop Nut	15	Outlet Diffuser Assembly	25	Splash Guard	35	Screw For Cable Presser	45	Fan Cover Screw
6	Plain Washer	16	Plain Washer	26	Motor Bracket	36	Cable Presser	46	Fan
7	Nut For Water Part Connector	17	Short Bush For Impeller	27	Motor Base	37	Bearing	47	Fancover
8	Gland For 1St Impeller	18	M-Seal Rotating Part	28	Plain Washer	38	Rotor With Shaft		
9	Inlet Diffuser Assembly	19	Pump Body O-Ring	29	Spring Washer	39	Stator With Winding		
10	Impeller	20	M-Seal Static Ring	30	Base Hex Bolt	40	Motor Housing		

### HYDRAULIC PERFORMANCE CURVES

