

MH Series

HORIZONTAL MULTISTAGE PUMP



OPERATING CONDITIONS

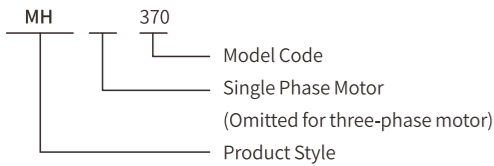
- Thin, clean, non-flammable and non-explosive liquid containing no solid granules and fiber.
- Liquid temperature:
Normal temperature type: -15°C~+70°C
Hot temperature type: -15°C~120°C
- Ambient temp up to 40°C
- Altitude: up to 1,000m

MATERIALS

- Pump body in AISI304 stainless steel.
- Motor shaft in AISI420 stainless steel.
- Diffusers in techno-polymer.
- Impeller in AISI304 or Techno-polymer.
- Suction and discharge mountings in cast iron.
- Mechanical seal in graphite and ceramic.
- Gaskets in EPDM and NBR.
- Motor casing aluminum.

ELECTRIC MOTOR

- Motor efficiency: IE1, IE2, IE3
- Full-enclosed air-blast
- Two-pole standard motor
- Protection class: IP55
- Insulation class: F
- Standard voltage, 50Hz:
1X220-230/240V
3X220-240/346-380V
3X220-240/380-415V
3X380-415V

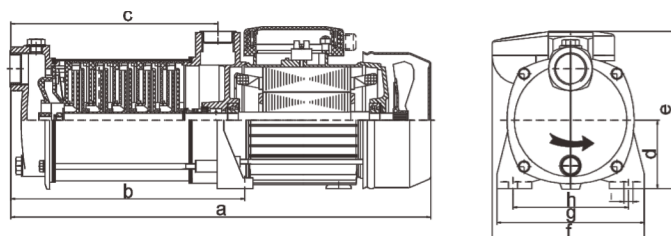


TECHNICAL DATA (220~240V/50Hz)

Model	Single-phase Motor				n=2850r/min			Dimensions (mm)			
	Input max	Output Power		Current	Q.max	H.max	Suct.max	DNA		DNM	
		kW	kW					HP	A	L/min	m
MH-370	0.55	0.37	0.5	2.5	60	30		1"	25	1"	25
MH-550	0.8	0.55	0.74	3.8	60	40		1"	25	1"	25
MH-750	1.1	0.75	1	5.2	65	50		1"	25	1"	25
MH-1000	0.6	0.4	0.53	3.0	80	20		1"	25	1"	25
MH-1100	1.0	0.65	0.9	4.6	80	33		1"	25	1"	25
MH-1200	1.2	0.75	1.0	5.5	80	43	8	1"	25	1"	25
MH-1300	1.3	0.90	1.25	6.0	80	52		1"	25	1"	25
MH-1500	1.5	1.10	1.5	7.0	80	65		1"	25	1"	25
MH-1800	1.5	1.1	1.5	9.8	180	50		1.25"	32	1.25"	32
MH-2200	2.1	1.65	2.2	12.5	180	60		1.25"	32	1.25"	32
MH-3000	2.9	2.2	3	13.6	190	70		1.25"	32	1.25"	32

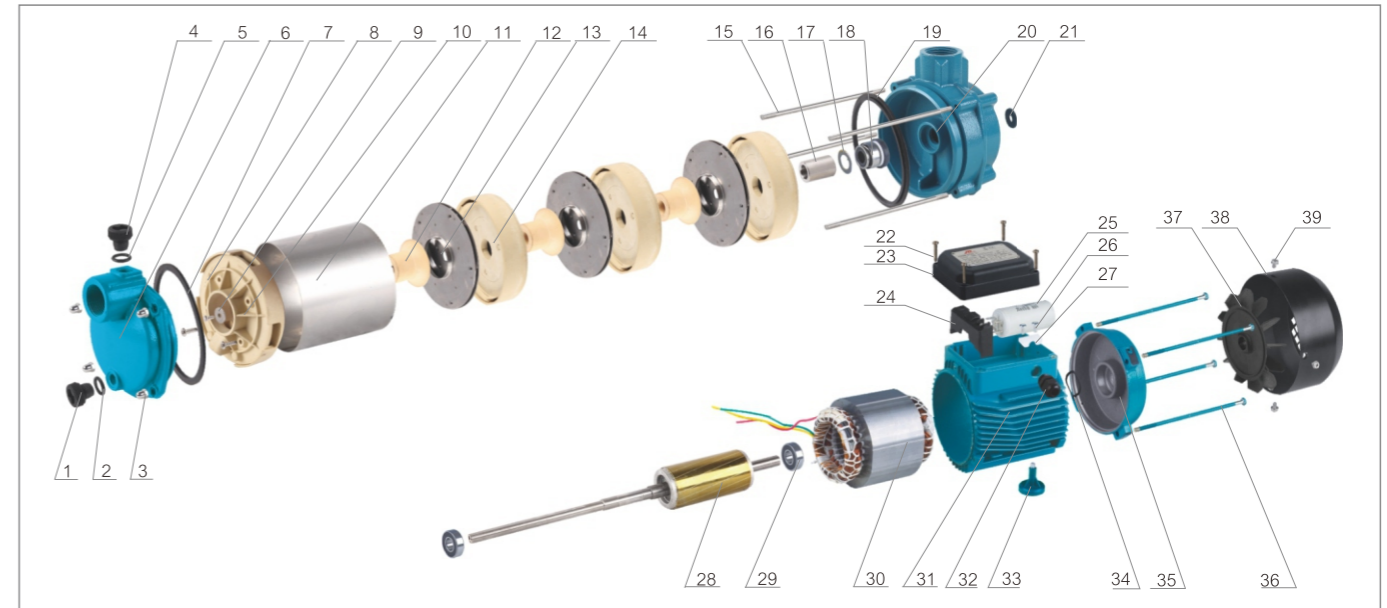
Other voltages and frequencies available on request.

OVERALL & INSTALLATION DIMENSIONS



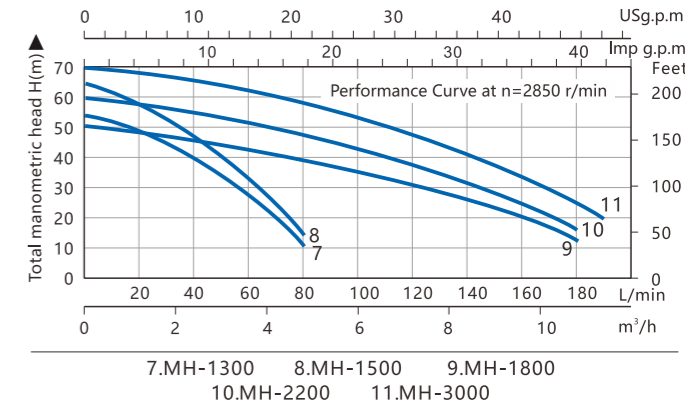
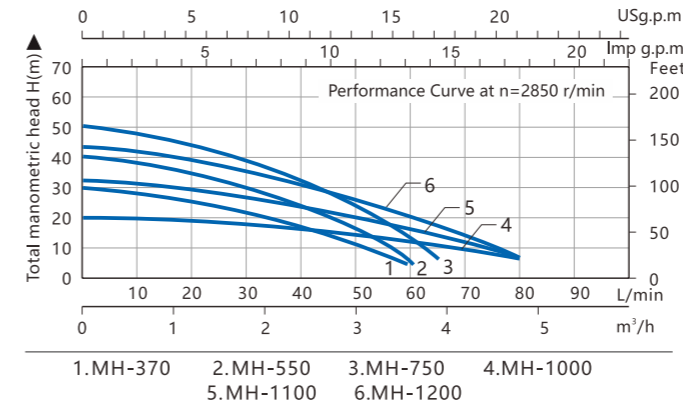
Model	Dimensions (mm)								
	a	b	c	d	e	f	g	h	i
MH-370	389	205	187	63	165	--	140	108	10
MH-550	413	228.5	210.5	63	165	--	140	108	10
MH-750	437	252	234	63	165	--	140	108	10
MH-1000	361	163	141	71	164	158	152	119	9
MH-1100	385	187	165	71	164	158	152	119	9
MH-1200	410	212	189.5	71	164	158	152	119	9
MH-1300	434	236	214	71	164	158	152	119	9
MH-1500	458	260	238	71	164	158	152	119	9
MH-1800	435.5	218	187.5	94	223	--	165	130	12
MH-2200	460	242.5	212	94	223	--	165	130	12
MH-3000	484.5	267	236.5	94	223	--	165	130	12

MATERIALS TABLE



NO.	DESCRIPTION	NO.	DESCRIPTION	NO.	DESCRIPTION	NO.	DESCRIPTION	NO.	DESCRIPTION
1	Drain plug	9	Gasket	17	Plain washer	25	Capacitor	33	Foot
2	"O" ring for drain plug	10	Diffuser	18	Mechanical seal	26	Screw for cable presser	34	Adjusting ring
3	Nut	11	Pump body	19	O-ring for front cover	27	Cable presser	35	Rear cover
4	Filling plug	12	Shaft sleeve	20	Front cover	28	Shaft and rotor	36	Motor tie-rod
5	"O" ring for filling plug	13	Impeller	21	Splash guard	29	Ball bearing	37	Fan
6	Pump cover	14	Diffuser	22	Screw for terminal box	30	Stator with winding	38	Fan cover
7	"O" ring for pump cover	15	Tension bar	23	Terminal cover	31	Motor housing	39	Fan cover screw
8	Hex bolt for diffuser	16	Shaft sleeve	24	Terminal block	32	Cable gland		

HYDRAULIC PERFORMANCE CURVES



PACKAGE INFORMATION

Model	Package dimensions & G.W. (mm)				MOQ
	L	W	H	kg	Kraft carton pcs
MH-370	406	175	205	9	300
MH-550	430	175	205	10	200
MH-750	454	175	205	11	200
MH-1000	401	210	225	13	200
MH-1100	425	210	225	13	200
MH-1200	450	210	225	14	200
MH-1300	470	210	225	15	200
MH-1500	475	210	225	16	100
MH-1800	490	187	265	19	100
MH-2200	515	187	265	20	100
MH-3000	540	187	265	21	50

