



OPERATING CONDITIONS

- Liquid temperature up to 60°C
- Ambient temperature up to 40°C
- Total suction lift up to 9m
- Continuous duty
- pH: 6.5 to 8.5

PUMP

- Pump Body: Cast Iron / Brass / Stainless Steel
- Impeller: Brass
- Mechanical Seal: Carbon / Ceramic / Stainless Steel
- Front Cover: Cast Iron with Brass or stainless steel Insert

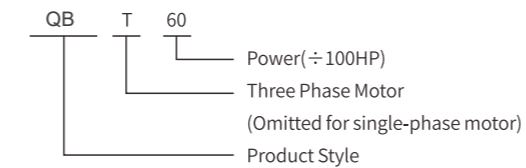
MOTOR

- Single Phase: IE1, IE2/IE3
- Motor Housing: Aluminum
- Insulation: Class B / Class F
- Cooling: External Ventilation
- Heavy Duty Continuous Work
- Shaft: AISI304/AISI420/AISI1045
- Protection: IPX4

ADVANTAGES & FEATURES

- Small size, high pressure
- Easy installation & maintenance

IDENTIFICATION CODES



QB-60 ST

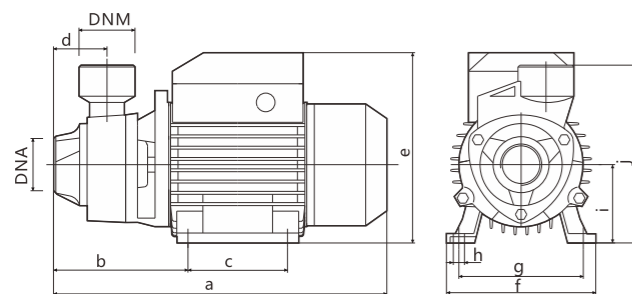


QB-60 B

TECHNICAL DATA(220~230V/60Hz)

Model	Single-phase Motor			n=3450 r/min			Dimensions (mm)			
	Input max kW	Output Power kW HP		Q.max L/min	H.max m	Suct.max m	DNA		DNM	
QB -60/ST/B	0.55	0.37	0.50	40	40		1"	25	1"	25
QB -70/ST/B	0.80	0.55	0.75	45	55		1"	25	1"	25
QB -80/ST/B	1.10	0.75	1.00	50	60	9	1"/1.5"	25/40	1"/1.5"	25/40
QB -90(1")	1.50	1.10	1.50	60	70		1"	25	1"	25
QB -100(1")	2.00	1.50	2.00	60	90		1"	25	1"	25
QB -90(1.5")	1.50	1.10	1.50	80	70		1.5"	40	1.5"	40

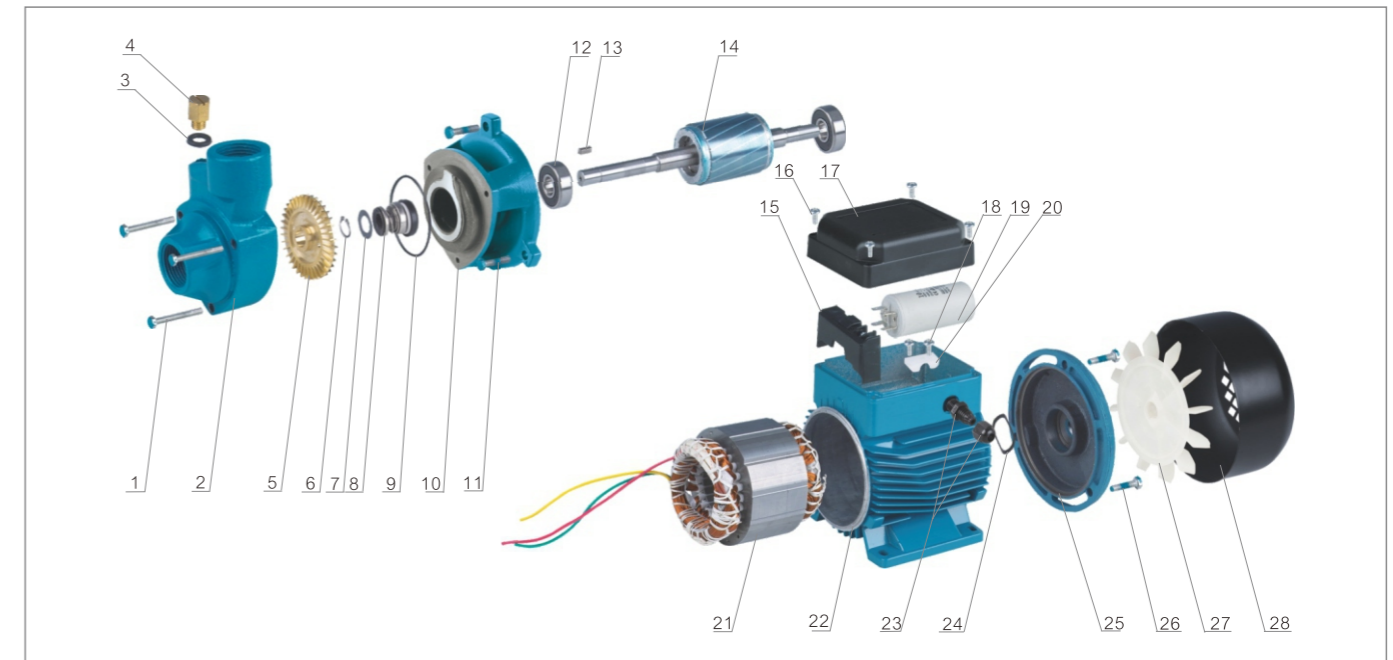
Other voltages and frequencies available on request.



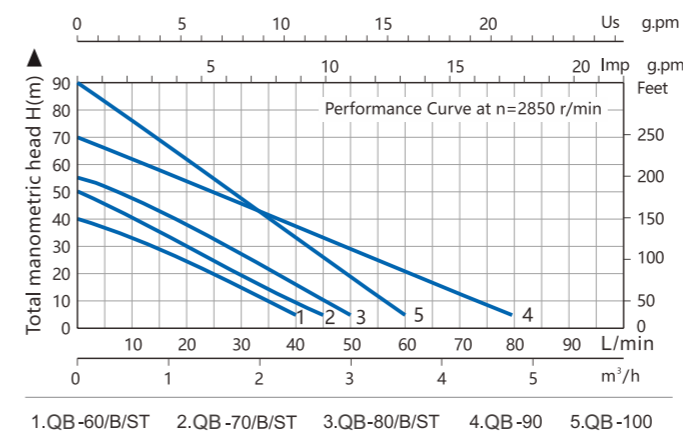
OVERALL & INSTALLATION DIMENSIONS

Model	Dimensions (mm)									
	a	b	c	d	e	f	g	h	i	j
QB -60	265	110	80	45	151	118	100	10	63	138
QB -70	305	122	90	50	181	136	112	10	71	150
QB -80	305	122	90	50	181	136	112	10	71	150
QB -90/ QB -100	380	138	100	68	182	180	162	10	80	156

MATERIALS TABLE



HYDRAULIC PERFORMANCE CURVES



NO.	DESCRIPTION	NO.	DESCRIPTION
1	Pump Body Screw	16	Screw For Terminal Box
2	Pump Body	17	Terminal Box
3	"O" Ring For Filling Plug	18	Screw For Cable Presser
4	Filling Plug	19	Capacitor
5	Impeller	20	Cable Presser
6	Circlip	21	Stator With Winding
7	Plain Washer	22	Motor Housing
8	Mechanical Seal	23	Cable Gland
9	"O" Ring For Pump Body	24	Adjusting Ring
10	Motor Front Bracket	25	Rear Cover
11	Screw For Motor Bracket	26	Rear Cover Screw
12	Bearing	27	Fan
13	Key	28	Fan Cover
14	Shaft And Rotor		
15	Terminal Board		

PACKAGE INFORMATION

Model	Package dimensions & G.W. (mm)				MOQ
	L	W	H	kg	Kraft carton pcs
QB -60/ST/B	285	150	180	5.3	300
QB -70/ST/B	320	180	200	9.5	200
QB -80/ST/B	320	180	200	10.0	200
QB -90/ QB -100	415	190	230	22.0	100

