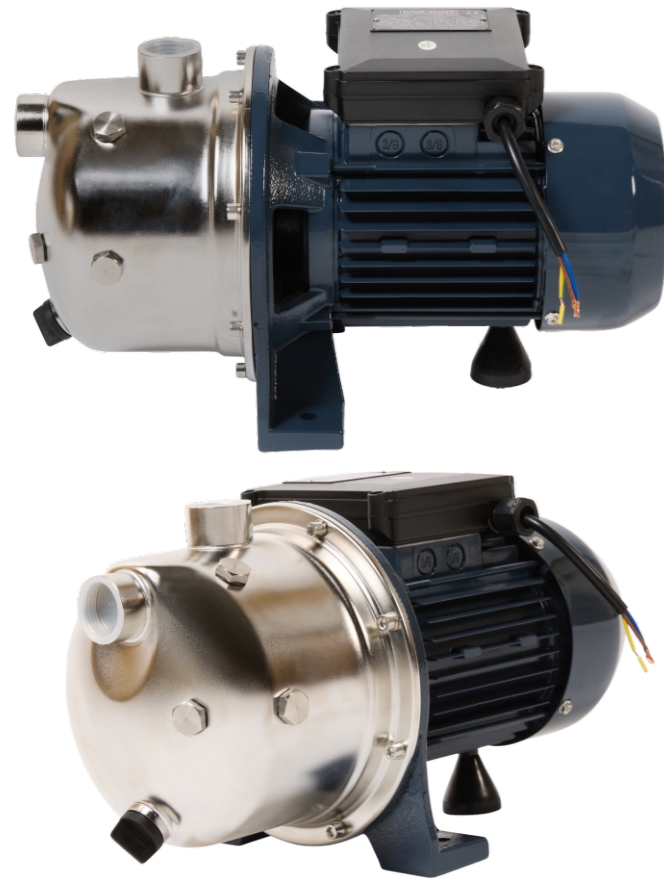


SJET-ST Series

STAINLESS STEEL JET PUMP



OPERATING CONDITIONS

- Liquid temperature up to 60°C
- Ambient temperature up to 40°C
- Total suction lift up to 9m
- Continuous duty

PUMP

- Pump Body: stainless steel
- Impeller: stainless steel
- Diffuser: Techno-polymer (P.P.O)
- Mechanical Seal: Carbon / Ceramic / Stainless Steel

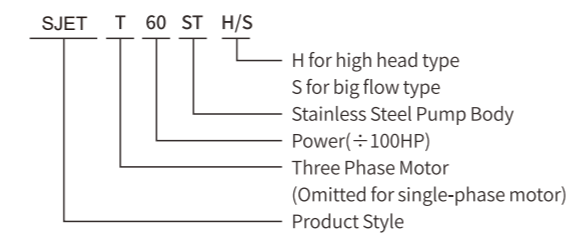
MOTOR

- Single Phase: IE1, IE2/IE3
- Motor Housing: Aluminum
- Insulation: Class B / Class F
- Cooling: External Ventilation
- Heavy Duty Continuous Work
- Shaft: AISI304
- Protection: IPX4

ADVANTAGES & FEATURES

- Stainless pump body
- Stainless shaft
- Stainless impeller
- Able to supply food grade stainless steel
- No pollution when pumping water

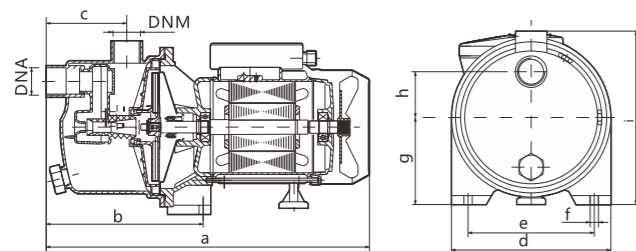
IDENTIFICATION CODES



TECHNICAL DATA (220~240V/50Hz)

Model	Single-phase Motor				n=2850r/min			Dimensions (mm)			
	Input max	Output Power		Current	Q.max	H.max	Suct.max	DNA		DNM	
	kW	kW	HP	A	L/min	m	m	Inch	mm	Inch	mm
SJET-60ST(H/S)	0.68	0.46	0.6	3.2	42/50	40/30		1"	25	1"	25
SJET-80ST(H/S)	0.88	0.60	0.8	4.2	46/65	45/35		1"	25	1"	25
SJET-100ST(H/S)	1.10	0.75	1.0	5.2	52/65	50/42	9	1"	25	1"	25
SJET-130ST	1.30	0.90	1.2	5.8	62	45		1"	25	1"	25
SJET-150ST	1.10	0.75	1.0	5.2	85	42		1.25"	32	1"	25

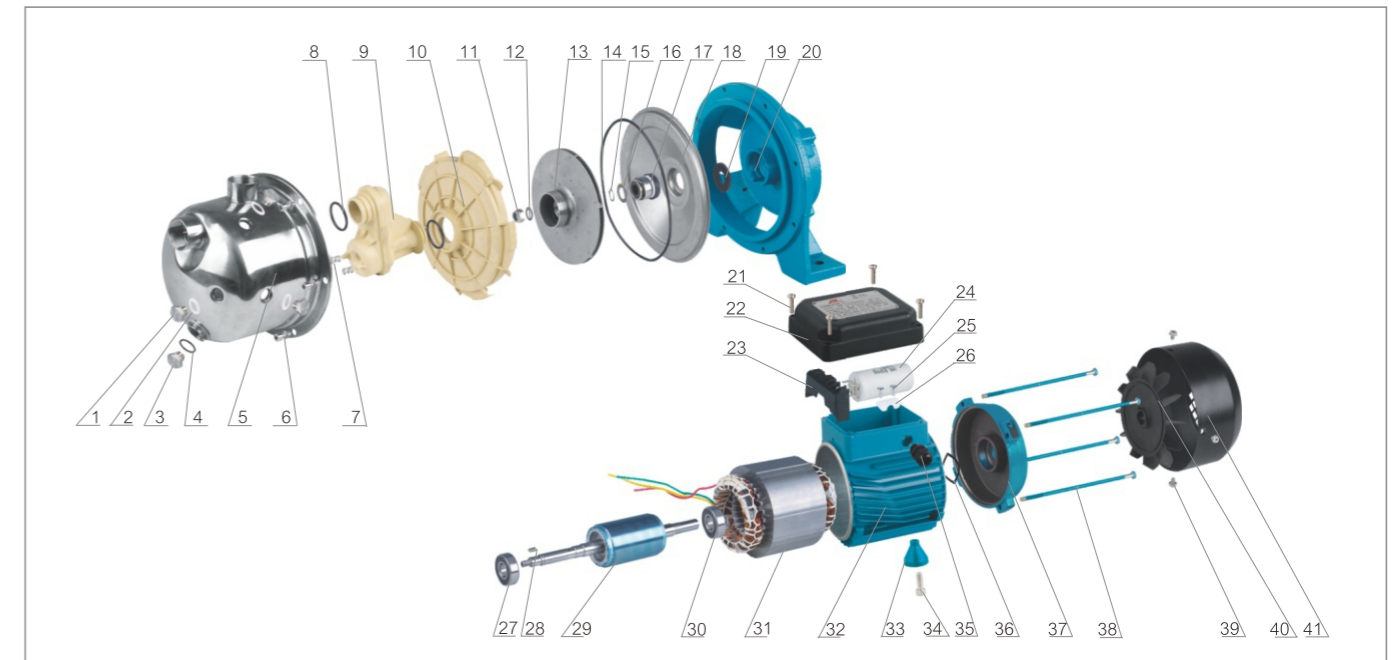
Other voltages and frequencies available on request.



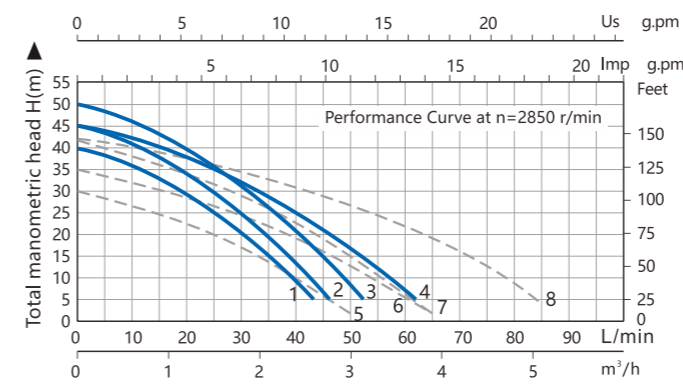
OVERALL & INSTALLATION DIMENSIONS

Model	Dimensions (mm)								
	a	b	c	d	e	f	g	h	i
SJET-60ST(H/S)	380	190	95	194	160	8	105	56	200
SJET-80ST(H/S)	380	190	95	194	160	8	105	56	200
SJET-100ST(H/S)	380	190	95	194	160	8	105	56	200
SJET-130ST	380	190	95	194	160	8	105	56	200
SJET-150ST	391	183	-	197	155	8	105	51	209

MATERIALS TABLE



HYDRAULIC PERFORMANCE CURVES



NO. DESCRIPTION	NO. DESCRIPTION	NO. DESCRIPTION
1 Air Screw	18 M.Seal Disc Holder	35 Cable Gland
2 Plain Washer	19 Splash Guard	36 Adjusting Ring
3 Drain Plug	20 Motor Bracket	37 Rear Cover
4 Plain Washer	21 Screw For T-Box	38 Motor Tie-Rod
5 Pump Body	22 Terminal Box	39 Fan Screw
6 Hex Bolt	23 Terminal Board	40 Fan
7 Venturi Tube Spring	24 Capacitor	41 Fan Cover
8 O-Ring For Venturi Tube	25 Screw For Cable Presser	
9 Venturi Tube	26 Cable Presser	
10 Diffuser	27 Bearing	
11 Impeller Nut	28 Key	
12 Plain Washer	29 Rotor With Shaft	
13 impeller	30 Bearing	
14 O Ring For Pump Body	31 Stator With Winding	
15 Circlip Ring	32 Motor Housing	
16 Plain Washer	33 Motor Foot	
17 Mechanical Seal	34 Motor Foot Screw	

PACKAGE INFORMATION

Model	Package dimensions & G.W. (mm)				MOQ
	L	W	H	kg	Kraft carton pcs
SJET-60ST(H/S)	400	210	225	9.5	300
SJET-80ST(H/S)	400	210	225	10.5	200
SJET-100ST(H/S)	400	210	225	11.5	200
SJET-130ST	400	210	225	12	200
SJET-150ST	400	210	225	11.3	200

