



OPERATING CONDITIONS

- Liquid temperature up to 60°C
- Ambient temperature up to 40°C
- Total suction lift up to 9m
- Continuous duty

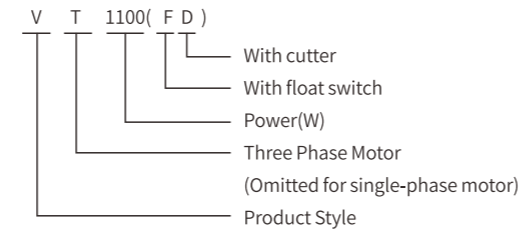
PUMP

- Pump Body: Cast Iron / Stainless Steel
- Impeller: Cast Iron / Stainless Steel
- Mechanical Seal: Carbon / Ceramic / Stainless Steel
- Float Switch: With/Without

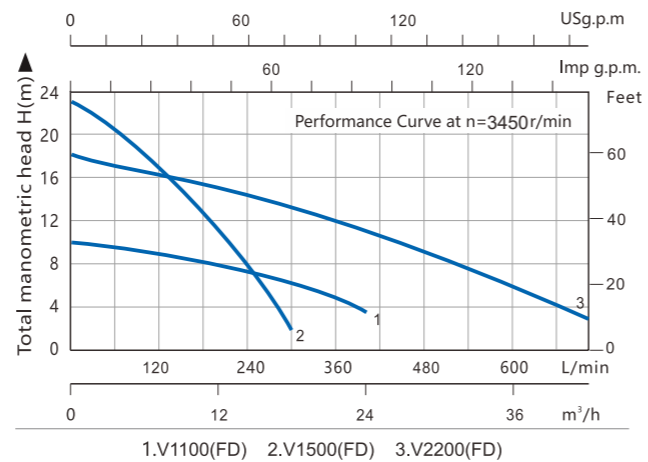
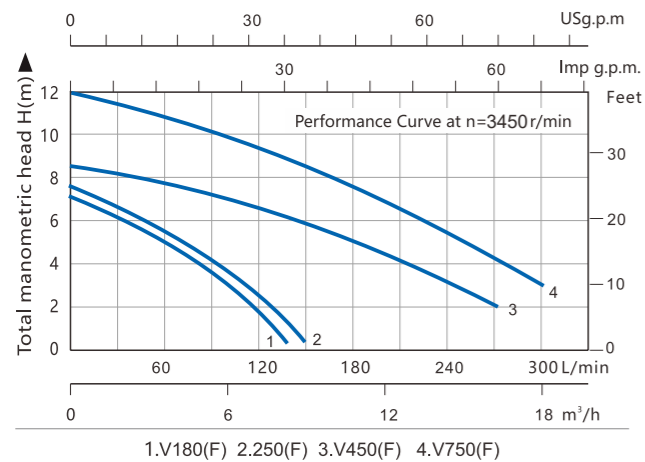
MOTOR

- Single Phase
- Heavy Duty Continuous Work
- Shaft: Stainless Steel
- Insulation: Class B / Class F
- Protection: IP68
- Water Cooling

IDENTIFICATION CODES



HYDRAULIC PERFORMANCE CURVES



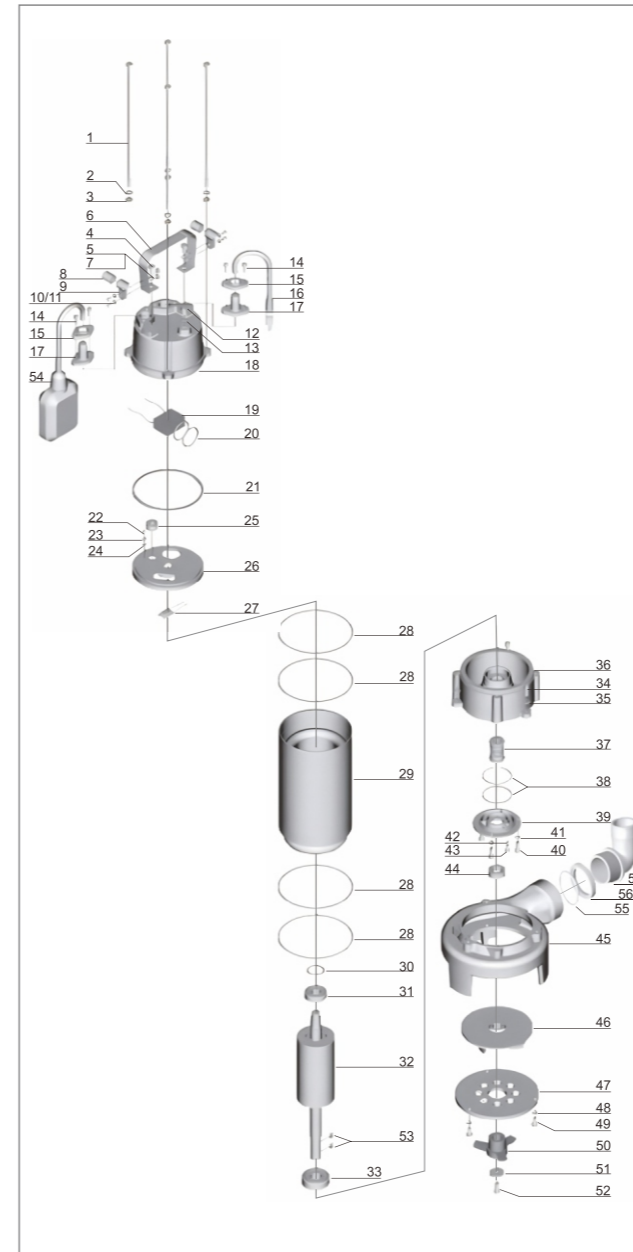
TECHNICAL DATA(220~230V/60Hz)

Model	Power		Voltage V	Capacity L/min	Max. Head m	Outlet diameter mm
	kW	HP				
V180(F)	0.18	0.25	220	133	7.0	40
V250(F)	0.25	0.33	220	150	7.5	40
V450(F)	0.45	0.6	220	275	8.5	50
V750(F)	0.75	1.0	220	300	12	50

Model	Power		Voltage V	Capacity L/min	Max. Head m	Outlet diameter mm
	kW	HP				
V1100(FD)	1.1	1.5	220	400	10	50
V1500(FD)	1.5	2	220	300	23	50
V2200(FD)	2.2	3	220	700	18	75

Other voltages and frequencies available on request.

MATERIALS TABLE



NO.	DESCRIPTION	NO.	DESCRIPTION
1	Bolt	30	Undulated washer
2	Stretching washer	31	Ball bearing
3	Washer	32	Rotor
4	Bolt	33	Ball bearing
5	Washer	34	Screw
6	Handle	35	Washer
7	Nut	36	Connection part
8	Protector	37	Mechanical seal
9	Cable presser	38	O-ring
10	Washer	39	Oil chamber cover
11	Screw	40	Screw
12	Bolt	41	Washer
13	O-ring	42	O-ring
14	Screw	43	Screw
15	Flange	44	Oil seal
16	Cable	45	Pump body
17	Cable protector	46	Impeller
18	Capacitor cover	47	Shredding ring
19	Capacitor	48	Washer
20	O-ring	49	Bolt
21	Rubber washer	50	Radial cutter
22	Screw	51	Washer
23	Stretching washer	52	Screw
24	Washer	53	Key
25	Line protector	54	Float switch
26	Motor cover	55	O-ring
27	Thermal protector	56	Connection nut
28	O-ring	57	Out-let connector
29	Motor stator		

PACKAGE INFORMATION

Model	Package dimensions & G.W. (mm)				MOQ
	L	W	H	kg	Kraft carton pcs
V180(F)	185	180	360	8.5	100
V250(F)	185	180	380	9.5	100
V450(F)	255	195	525	17.5	100
V750(F)	265	200	525	19.5	100
V1100(FD)	245	295	590	23.5	100
V1500(FD)	265	360	600	24	100
V2200(FD)	265	360	600	33	100

